

SWIFT CONSERVATION IN TOULON (VAR – France)



**THE INCLUSION OF SWIFT NEST SITES IN
BUILDING PROJECTS SINCE 2015**



Toulon is located in the southwest of the Var, between Marseille and Nice and between sea and mountains. It's the first military port of France.

You see on the photo the Toulon harbor, the city and the different districts.

In Toulon, like almost everywhere else, during obligatory construction and building work, no consideration was given to the nesting sites of the swifts.

The holes they need were systematically filled.

In 2015, after information and awareness works from different town hall services, the mayor was interested in the project to protect and valorize these emblematic species.

And since, every year, meticulous census campaigns of nesting sites are carried out, by a group of volunteers who are fans of the swifts.

Neighborhood by neighborhood, street by street, more and more buildings are observed. So to day 2400 nests have already been located.

The buildings occupied by the swifts are taken in photos, and the flight holes are pointed out.

The informations are reported on an excel table and also on the city cadastre.

Now companies, developers, architects... are informed of the obligation to take into account swifts nests in the urban rehabilitation.

ALPINE SWIFTS

nesting in the cliffs of the Toulon mountains, in the natural environment, not yet in the city. April to november.



COMMON SWIFTS

present in all the city, particulary in the old center, but also in outlying areas, buildings and even individual houses.

April to mid august.



PALLID SWIFTS

Large colonies essentially in militaries sites of the Naval base, but also in town and particulary in the Administrative City of Lices (a group of building of several administrations).

April to the end of october.



Nests are located in all kind of cavities, under roofs, at the back of gutters, in the ramparts of historical monuments, cracks linked to deterioration, erosion of masonry, etc...



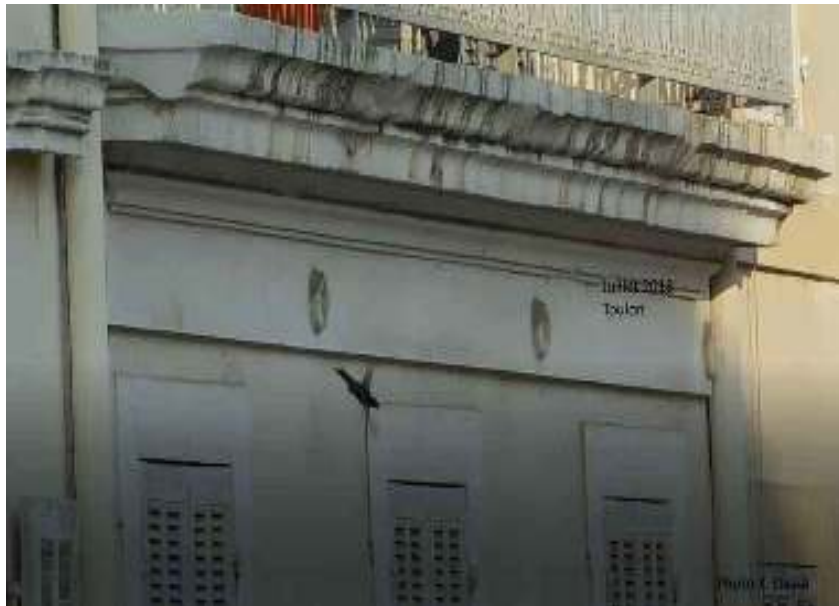
Here it's a new construction, three or four years old, it's the entrance hall of Kedge college, a few days ago after installing a cry diffuser for 20 nest boxes located above on the roof, i saw this : Five cracks on the top of the columns, five cracks occupied by common swifts.

Obviously, the swifts prefer cracks to nest boxes !

Ventilation holes often leading into attics, many boulin holes too.

The administrative city of Lices. More than 200 nests in the roller shutters of this administrative city (it's a group of several administrations).

**In ventilation holes
often leading into attics,**



**Here in a casing of roller shutters, more than 200
nests of common and pallid swifts are located.**





In this site,

Here are around almost ten buildings with the same problem.

The nests are located in rupture joins.

External thermal insulation is planned.

We are looking for solutions,



I followed about 80 projects since 2015 :

(façades renovations, roofing of old buildings, and also new constructions).

So, about 250 historical nesting sites have been conserved during and after works (and generally reoccupied by the swifts).

And, when it was not possible, artificial nests boxes are integrated into the walls.

Today nearly 1500 artificial nests boxes have been installed.



1/ EXAMPLE IN THE HISTORICAL CENTER

**FACADES REHABILITATIONS :
CONSERVATION OF BOULIN OR
VENTILATION HOLES**



BEFORE



small wooden concrete tube



AFTER



You see BEFORE and AFTER.

The swifts nests are located on the photo.

After major renovation work on this building, the cavities where the swifts nests were located were recreated and a small wooden concrete tube was added for the entrance to the nests. More asthetic for the architects and also the pigeons can't come in.

There are many similar projects.

2/ EXAMPLES IN NEW CONSTRUCTIONS

100 ARTIFICIAL NESTS BOXES IN ECODISTRICT CHALUCET



**ALLEGRE BUILDING
20 NEST BOXES**



ECO DISTRICT CHALUCET



**A RECESS IS PROVIDED IN THE WALL
AND THE NEST BOXES ARE THEN FITTED**

HIGHER SCHOOL OF DESIGN



In the center of the city, a new eco district CHALUCET, has emerged on the site of a former hospital whose buildings dilapidated, abandoned for many years. In poor condition, were demolished.

Buildings nevertheless frequented by a large colony of common swifts.

After demolition, five new buildings were built

After meetings and discussions with the project owner and the architects, it has been decided that 100 artificial nest boxes would be integrated on the site. 20 per building.

Here, in the building **Allegre**, the nest boxes were integrated into the concrete.

Here, in the building of **ESAT** (Higher school of design) 20 Boxes.

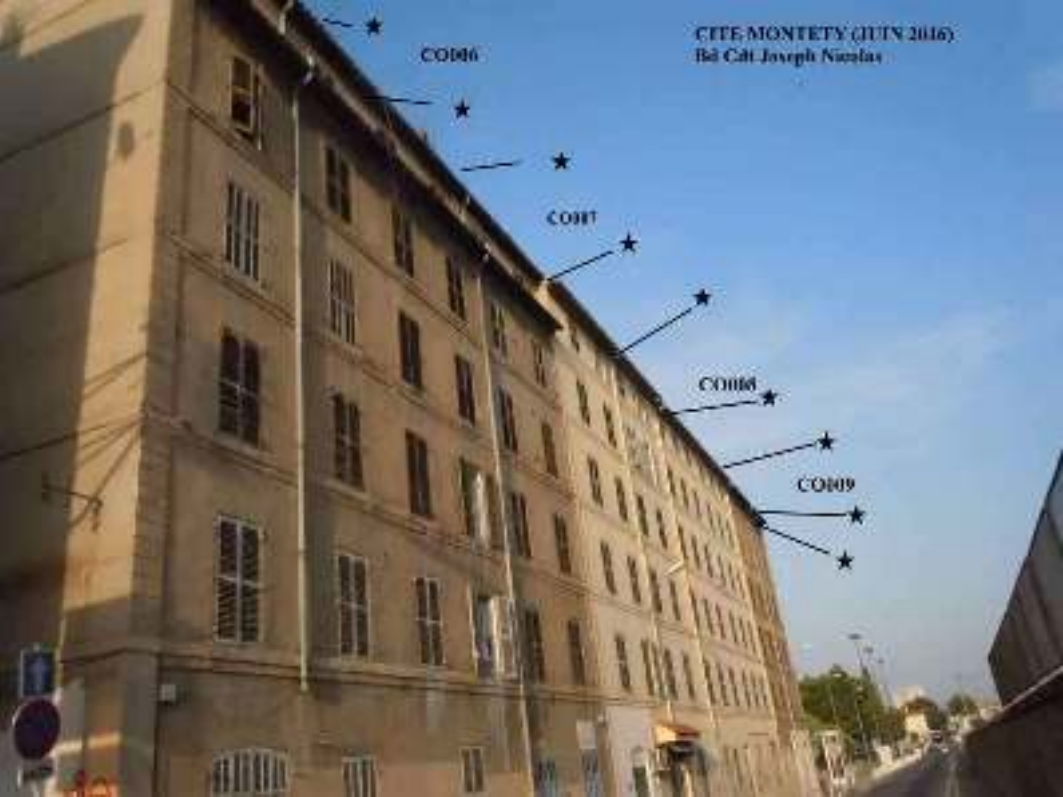
A recess is provided in the wall, and the nest boxes are then fitted

The constructions lasted several years and ended 4 years ago.

Last year about 20 artificial nests occupied.

ECO DISTRICT MONTETY

120 ARTIFICIAL NESTS BOXES IN ECODISTRICT MONTETY



← BEFORE

AFTER ↓



MONTETY : An entire district of old buildings deteriorated by time and inhabited by humans but by a big colony of swifts was deconstructed and replaced by a brand new. Tourism hotel, student residence, school of health professions.

The project took place over several years .

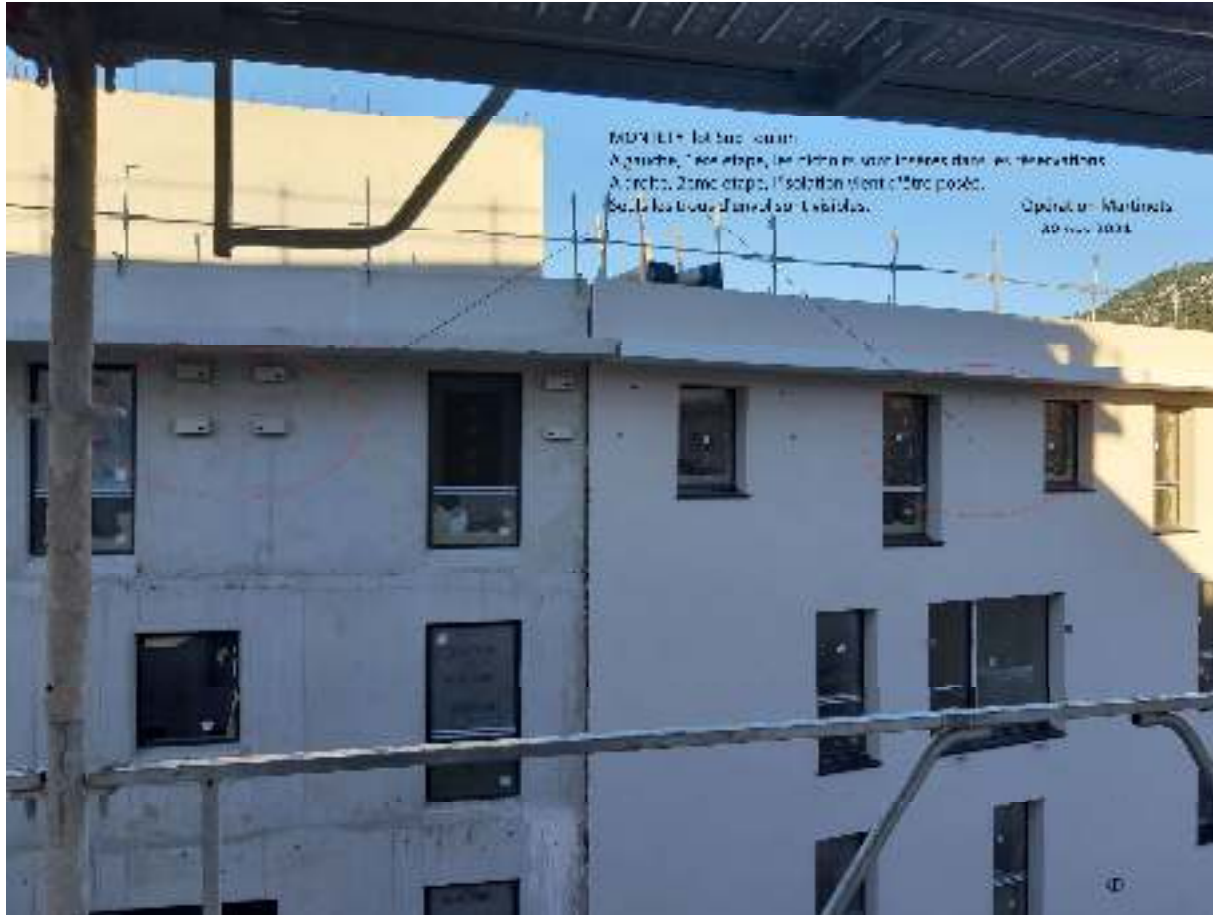
All the constructions are not yet finished.

On this site, we had located about 60 historical nests in the old buildings, and after meetings with the project owner, more than 140 nest boxes were integrated.

This first phase is finished 2 years ago.

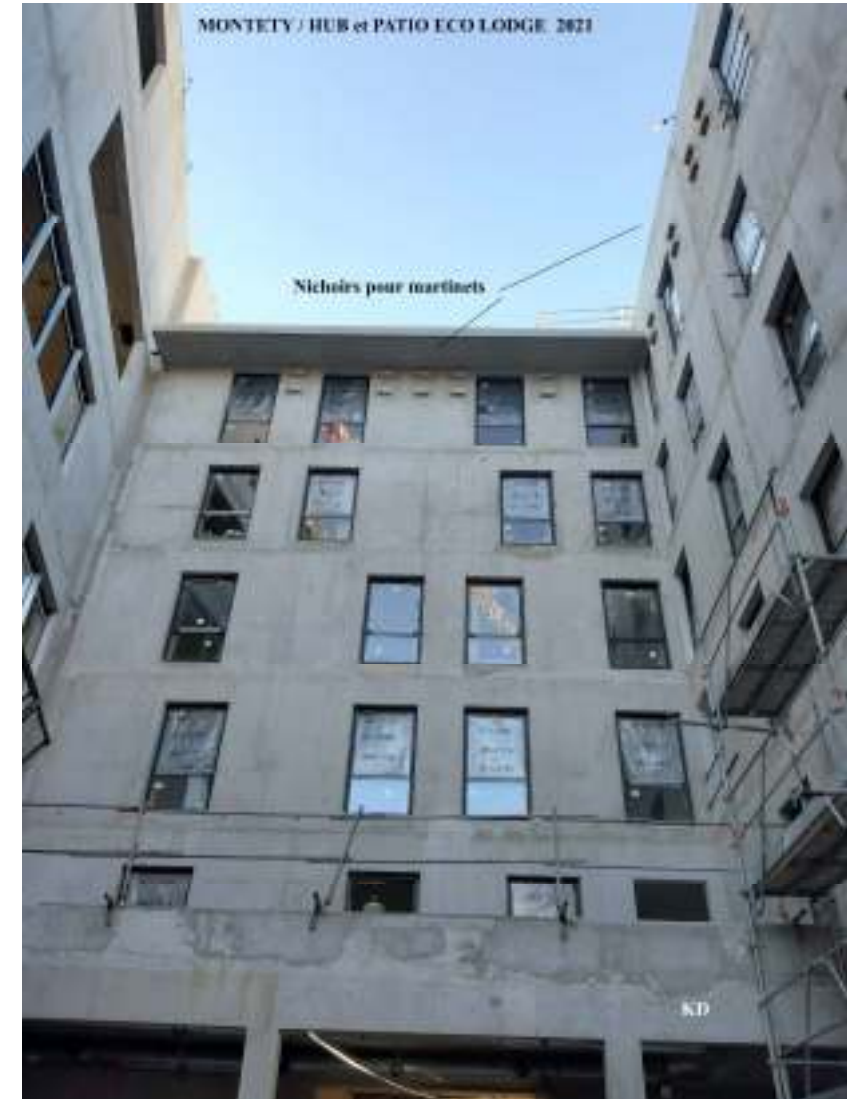
Boxes integrated into a reservation in the walls, and after covered in the thermal insulation.

Last year, about 20 nests boxes occupied.



TOURIST HOTEL B&B

BOXES SEMI INTEGRATED IN THE WALLS THEN COMPLETELY IN THE INSULATION.



ECO LODGE FOR STUDENTS



**17 NEST BOXES INTEGRATED
SILO PUBLIC PARKING ZENITH**



5 historical nests destroyed in a wall at the back of this new structure (Parking), so 17 seventeen nest boxes were integrated in the concrete, in 2023.

And to finish my presentation, still in the Montéty district, a beautiful silhouette of a swift made up 61 in woodcrete nest boxes, installed at the end of july 2023 on a blind wall of the administrative city.

On operation financed by the French Office of Biodiversity (OFB).

The project was carried out by the LPO, and the boxes are Nat'h Production.



**A BIG SILHOUETTE OF
SWIFT
ON A BLIND WALL.**

**MONTEY
Administrative city of
Lices**

**61 NEST BOXES
IN WOODCRETE**

**FINANCED BY THE FRENCH
OFFICE OF BIODIVERSITY
(OFB)**



MANY THANKS FOR YOUR ATTENTION

For this fantastic bird, I created last year, the association « MARTINETS D-ICI ET D'AILLEURS » to raise awareness, inform and protect swifts nests in urban areas during building works, in Toulon and more...



Katherine Dubourg/TOULON